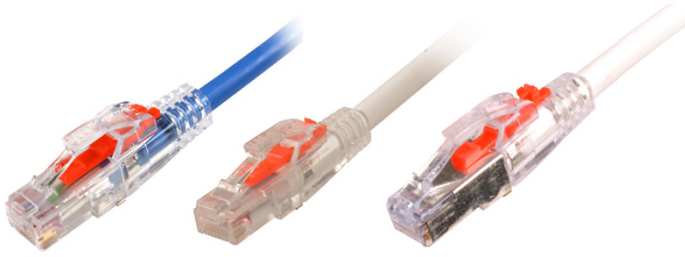


LockIT™ Secure Patchcords



LKP - series cords (LockIT-to-LockIT)
LKM - series cords (LockIT-to-standard RJ45)



Key

LockIT Cord

Parts



Locked



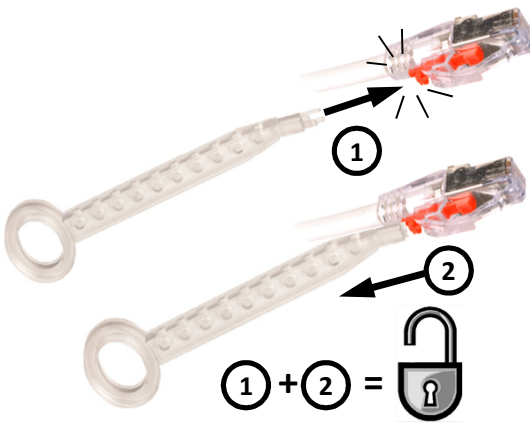
Unlocked


1



Push in red
tab to lock

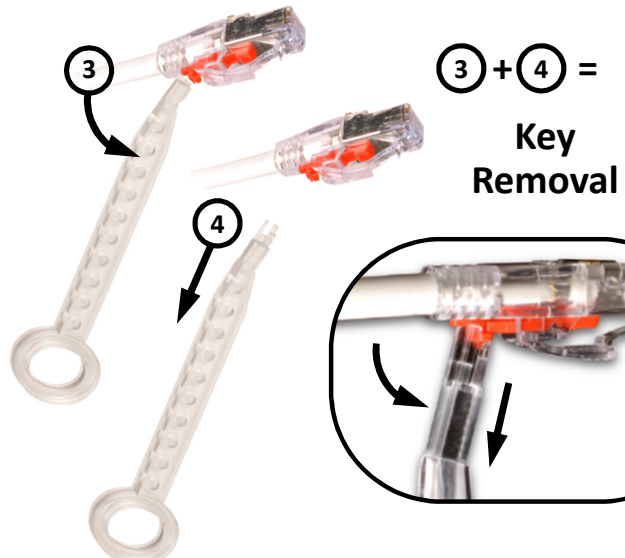
2



$1 + 2 =$ 

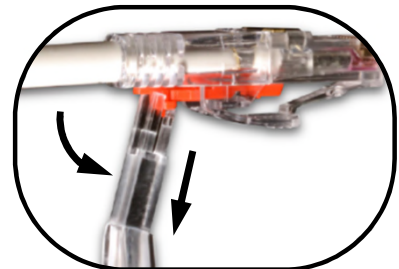
Unlock

3



$3 + 4 =$

Key
Removal



LockIT™ Secure Patchcords



4

To assist safe installations, comply with the following:

- A. Use caution when installing or modifying telecommunications circuits.
- B. Never touch uninsulated wire terminals unless the circuit has been disconnected.
- C. Never install this device in a wet location.
- D. Never install wiring during a lightning storm.

Lors de l'installation, respectez les consignes de sécurité suivantes:

- A. Utiliser avec prudence lors de l'installation ou de la modification circuits de télécommunications.
- B. Ne jamais toucher les bornes de fil métallique non isolés sauf si le circuit a été débranché.
- C. Ne jamais installer cet appareil dans un endroit humide.
- D. Ne jamais installer pendant un orage.

To ensure you have the latest
revision to this document, please visit: www.Siemon.com



Global Headquarters
Watertown, Connecticut USA
Tel: (1) 866-548-5814

For a complete listing of our global offices visit our web site